



# 支持10万TPS的高性能服务间通信解读

刘宝





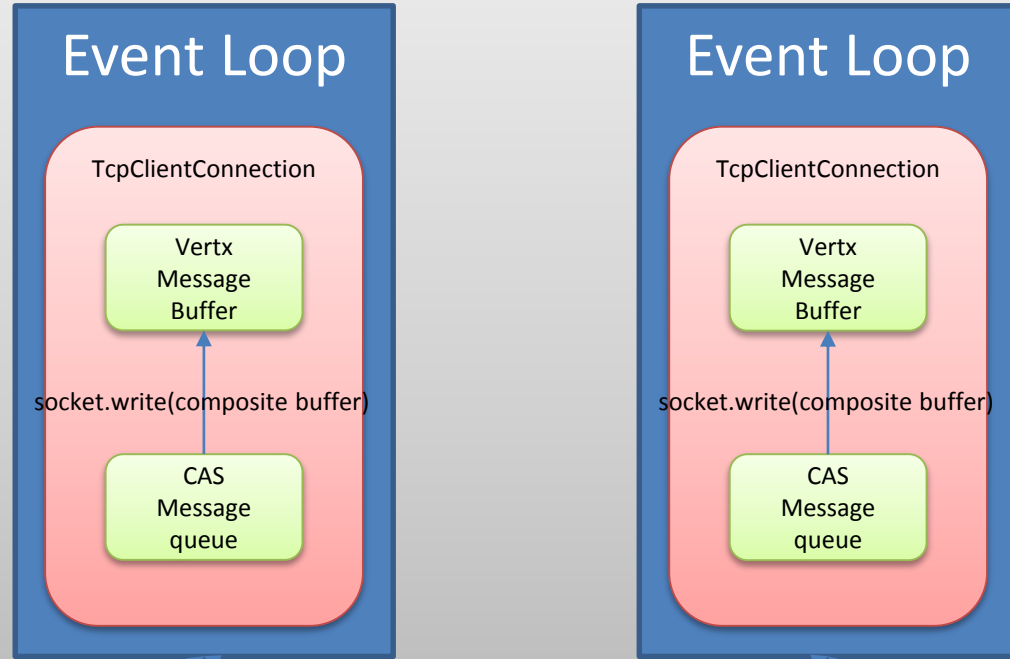
**刘宝**，华为微服务开发专家，Apache ServiceComb Committer。拥有10年以上java开发框架的开发和运维经验。热爱微服务，并持续为它们开发一些常用的工具，比如进行中的servicecomb-fence项目。也喜欢分享开发和软件工程能力建设方面的一些心得，它们都发布在华为云博客和知乎专栏上面。



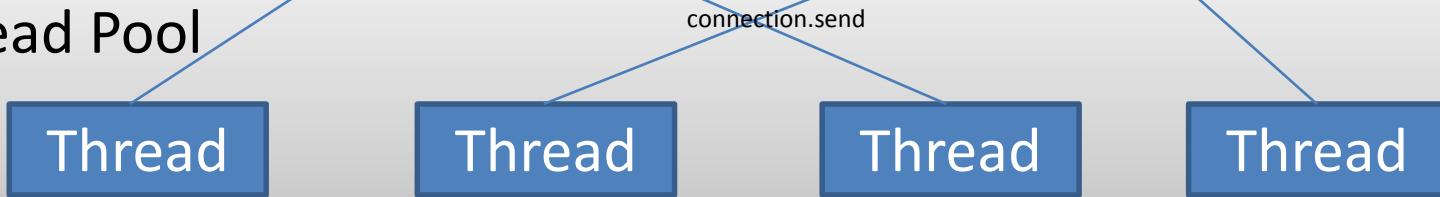
# 消费端Consumer



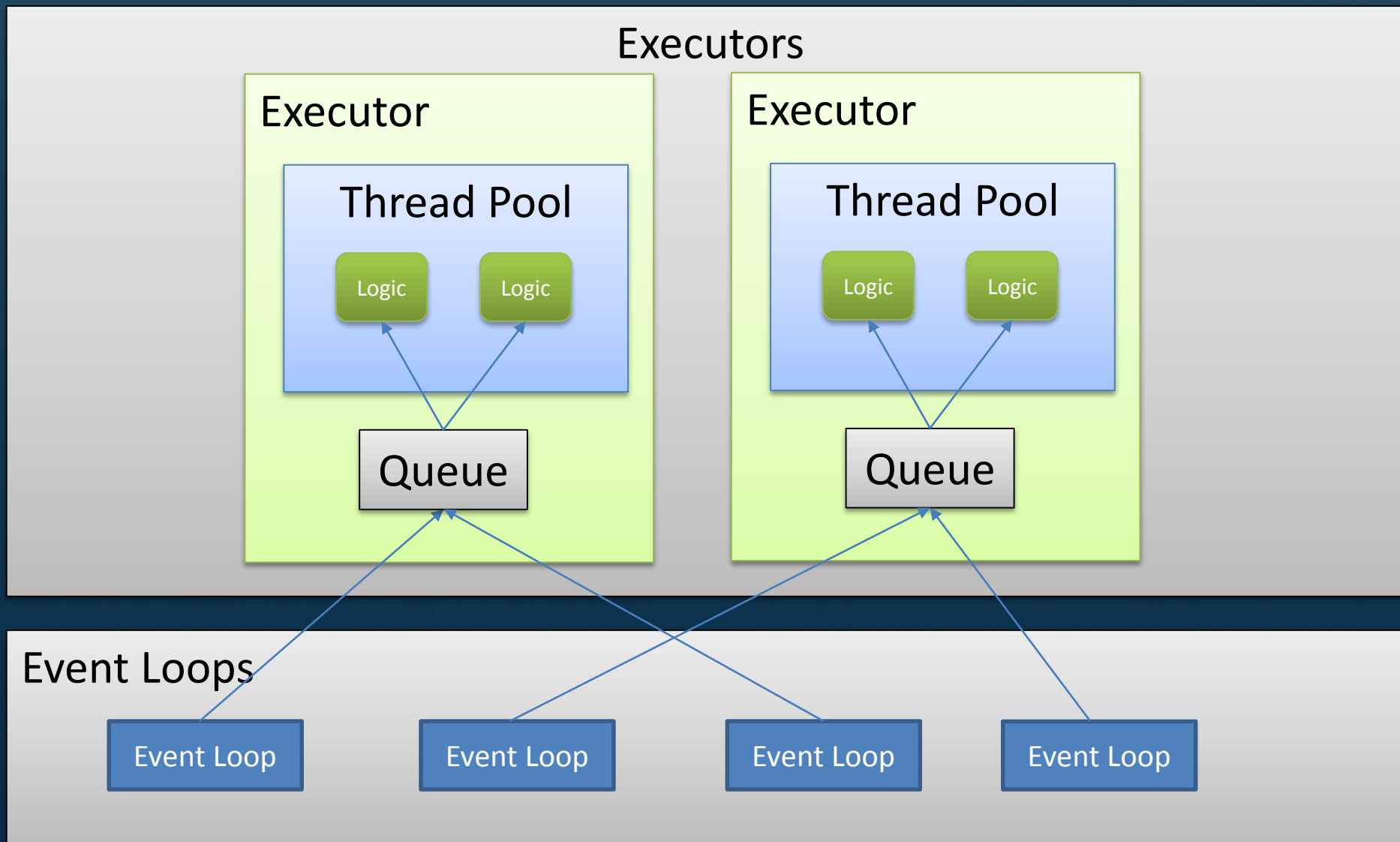
## Event Loops



## Thread Pool



# 提供端Provider



# 可靠性



- 隔离仓

```
servicecomb:  
  executors:  
    Provider:  
      [schemald]:  
        [operationId]: executorForSlowMethod
```

- 丢弃策略

```
servicecomb:  
  executor:  
    default:  
      maxQueueSize-per-group: 1000  
    Provider:  
      requestWaitInPoolTimeout:  
        [schemald]:  
          [operationId]: 30000
```



# 性能模式



服务A	→	服务B
	批量方式(批量API)	
	缓存方式(本地缓存)	
	调用方式(本地优先/3层)	
	线程模型(异步)	
	HTTP协议(长连接/隔离)	
	JVM(GC策略)	
	硬件(开启RSS)	





# Thank You.

**Copyright©2018 Huawei Technologies Co., Ltd. All Rights Reserved.**

The information in this document may contain predictive statements including, without limitation, statements regarding the future financial and operating results, future product portfolio, new technology, etc. There are a number of factors that could cause actual results and developments to differ materially from those expressed or implied in the predictive statements. Therefore, such information is provided for reference purpose only and constitutes neither an offer nor an acceptance. Huawei may change the information at any time without notice.

Grow with Intelligence



[servicecomb.apache.org](https://servicecomb.apache.org)  
[github.com/apache?q=servicecomb](https://github.com/apache?q=servicecomb)  
[www.huaweicloud.com](https://www.huaweicloud.com)